

6TL10

TABLE TOP BASE PLATFORM



*fast*ATE[®] platforms
are the ideal base
to develop ATE solutions

6TL provides the base, the
integrator provides the ATE

The purpose of the 6TL-10 base platform is to make order out of the chaos in simple table top test set-ups, where typically, a PXI chassis or rack&stack instruments are used on top of a table.

Thanks to the 6TL10, these expensive resources together with 6TL YAVModules, can be wired up to the Virginia Panel S6 receiver, to get a real professional tester as an entry point to the FastATE technology.

The platform is managed thanks to the 6TL MMI module, and therefore an external controller with NI-CAN will be needed to interface with the platform.

Thanks to the integrated VPC S6 mass interconnect interface the system allows a free choice of fixtures.

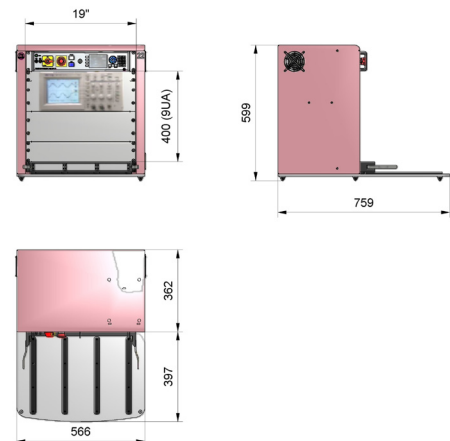
- FastATE technology: Modular, scalable and top flexible approach; Minimum wiring and easy maintenance; LabVIEW drivers.
- Low sized - High mixed production batches
- Ideal for ISP and Functional Test
- 6-slot Virginia Panel receiver
- Platform Manager (Power, Temperature and Safety), 6TL H73000301; EPO safety function included, and possibility to include up to 4 additional functions.
- 7U 19" free rack space for integration of third party equipment (350mm depth)
- Small footprint
- CE compliant, ESD safe



www.6TL.es

For more information please contact Romex B.V, Remmerden 5, 33911TZ, Rhenen, The Netherlands.
tel +31-317-398787, Fax+31-317-398780, e-mail: info@romex.nl, Website www.romex.nl/test or www.testprobes.nl

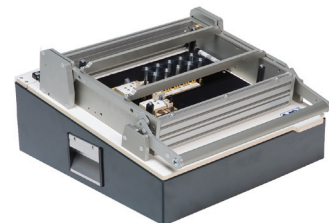
Platform Operation	Off-Line
Type	Table top with 19" rack
Wxdxh	566 x 759 x 599 mm
Weight	25 Kg
Power requirements	220V AC / 50Hz, <2KW
Press unit	Not included (every Fixture Kit will include the press unit)
Fixturing type	Manual Fixture Kits with S6 ITA interface; Baseband and HF
Built in 19" rack free space	7U 830mm depth
Mass interconnect solution	6 slots. Virginia Panel S6
Platform Manager	6TL module P/N H73000301 (Power, Temperature & Safety Management)
Platform Controller	Not included
Operator interface	Not included
Keyboard + mouse	Not included



The 6TL10 is ideal for	ISP Boundary Scan Functional Test	Combine with YAV90ISP and Algocraft WriteNow Programmer Combine with YAV90JTAG, YAV90JTAH and JTAG Technologies Combine with YAV90CIN, YAV904X8 and PXI Chassis (6TL-08 Plus)
In the following environments		Production, from Low to Mid sized production batches, High Mix.

As any *fastATE* base platform, the 6TL10 features:

- 6TL **YAV** Modules compatibility.
- PXI chassis direct integration
- Reliable mass interconnect interface (VPC 90 series compatible)
- Short delivery time



	Basic	Plus
Controller	Not included	PXI embedded
		NI PXIe-8108 Core 2 Duo 2.53 GHz Controller, Win 7.
Platform manager	H73000301	H73000301
PXI Chassis	No	NI PXI-1031, 4-Slot 3U PXI Express Chassis
PN	H71001000	H7100100P