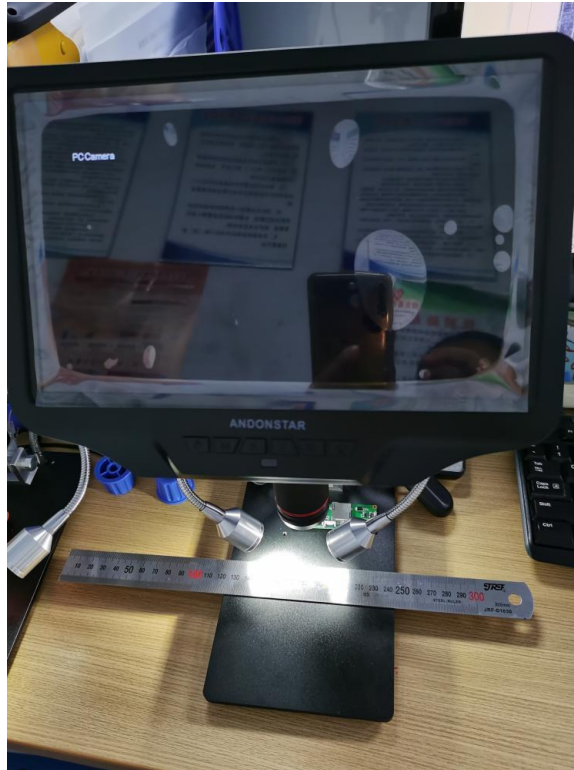


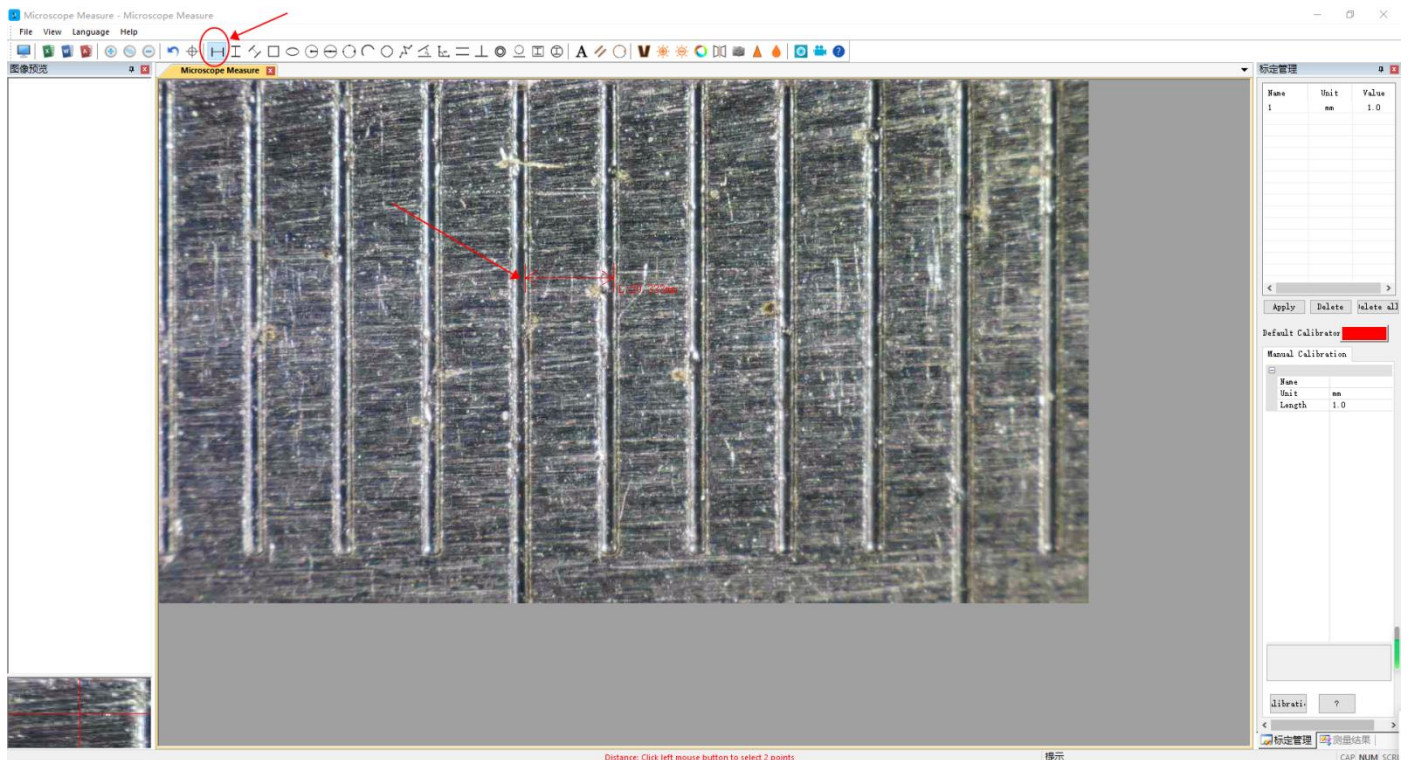
1. Prepare your microscope, ruler (FLAT) and measurement software.

Keep in mind that the ruler needs to be as flat as possible on the table under the camera
it cannot be tilted or bended.

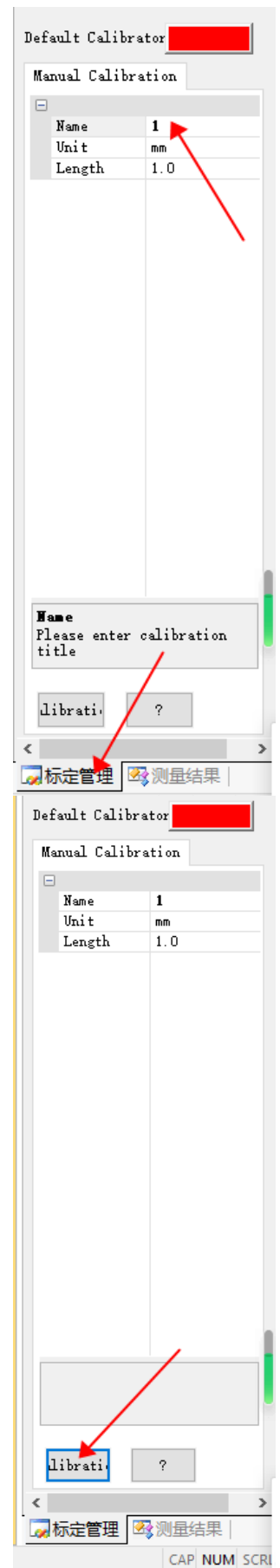


2. Calibration

1) Measure the distance of 1mm on the ruler image in the software, as shown below

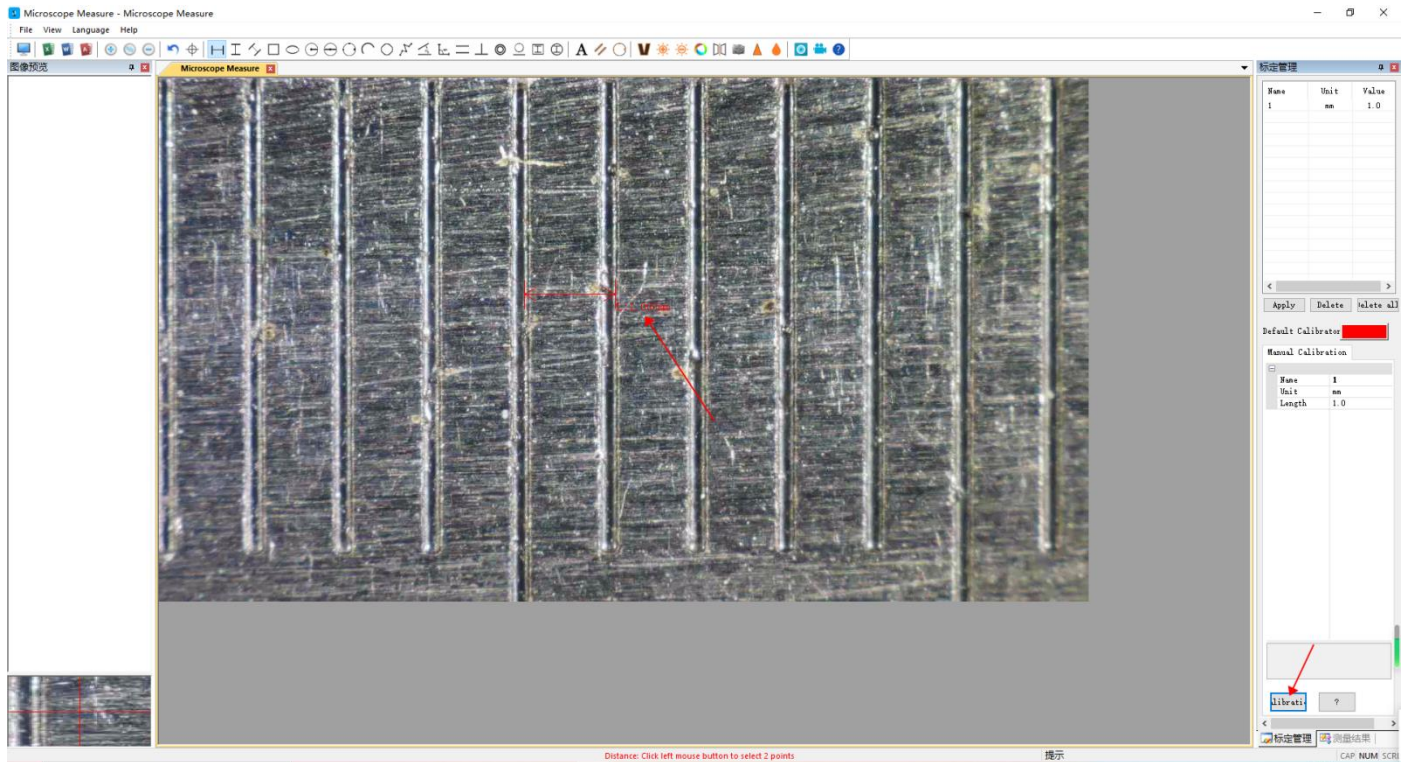


- 2) On your computer screen in the Bottom right corner Select “Calibration Management” and give it a name, for instance 1.
Select the Units of your ruler “mm”



- 3) Double click on the “CALIBRATION” button

As shown in the image, Now the old calibration value will be overwritten with the new actual, measured value of 1mm.

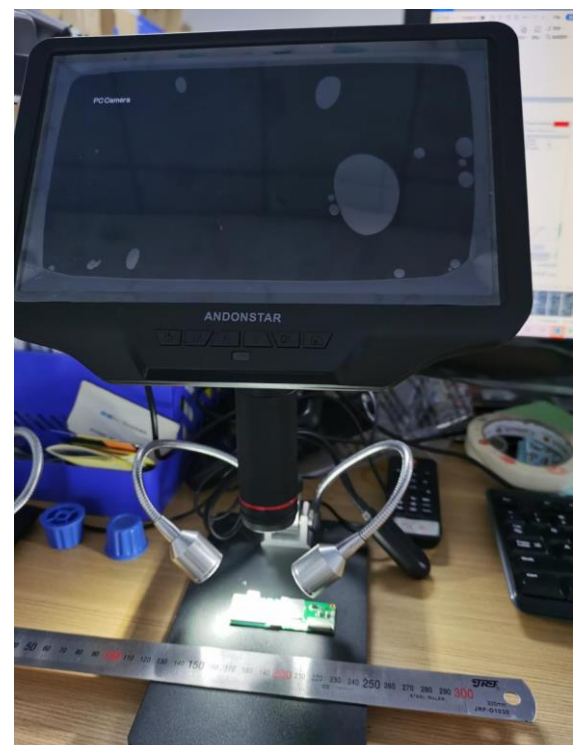


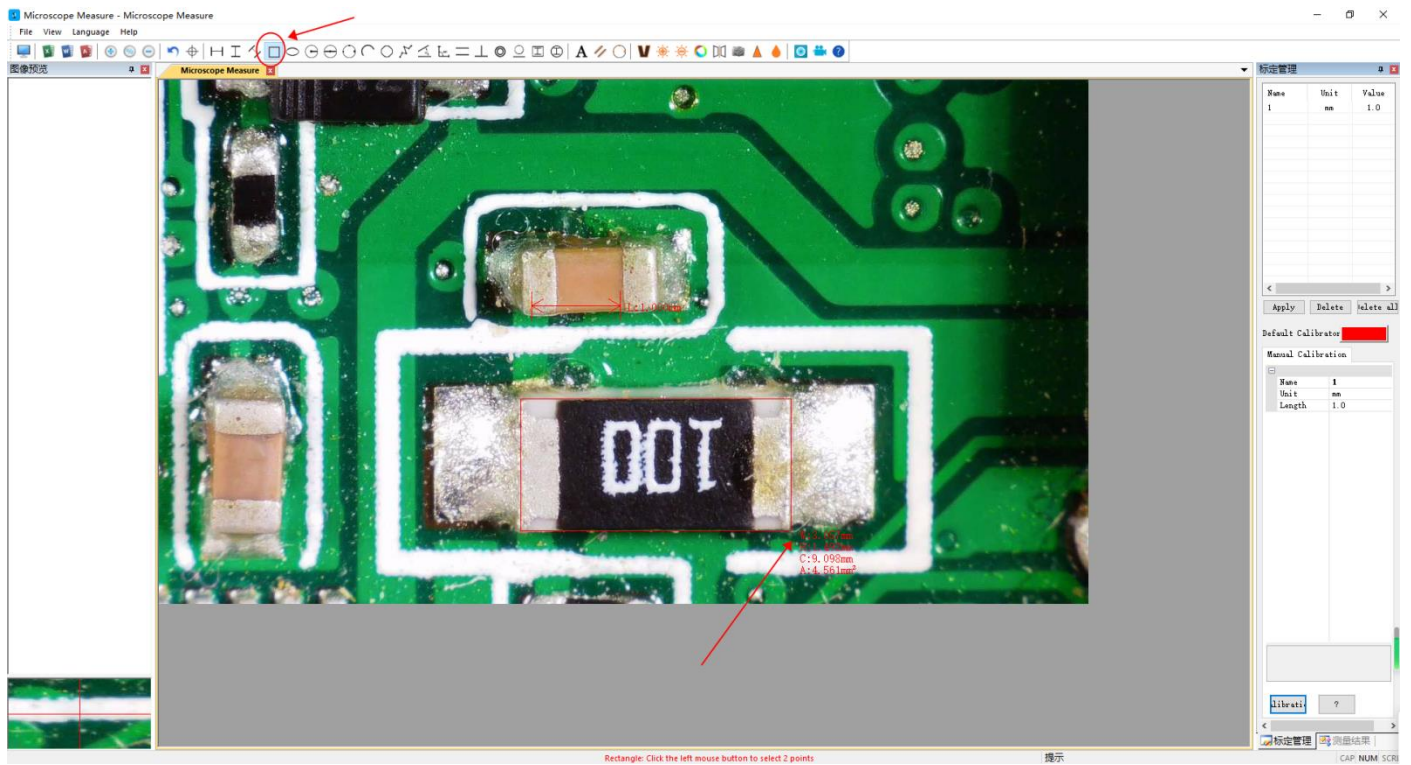
3. After the above calibration has been done you can start your measurements

Note: After the calibration is executed you should **not** adjust the focus using the camera ring anymore as this will require you to do the calibration again. You can adjust the image using the height adjustment ring of the instrument.

Reason: The data measured at the same magnification is valid, if you adjust the focus ring, the magnification will change, different magnification, will influence the accuracy of the calibrated measurement.

After calibration, you can remove the ruler, and start measurements on your parts or PCB's.





For example see above image with, rectangle measurement (length, width, perimeter, area)