

# 6TL19

## HALF RACK BASE TEST PLATFORM



*fastATE*<sup>®</sup> Technology platforms  
are the ideal base  
to develop ATE solutions

6TL provides the base, the  
integrator provides the ATE

The 6TL-19 is the perfect base for the integration of Automatic Test Equipment to cover the low to mid, high-mix electronic productions.

Following the FastATE technology, the resulting integrated test system will be simple, easy to maintain and cost effective.

Managers involved in Electronics Design & Production need to speed up launch and new products introduction cycle times; The test equipment to guarantee the quality of the deliveries is a must. At this point, the 6TL-19 will help, since all the basics needed when thinking about a reliable test production tool are already included, with the corresponding time & money savings. The base platform features:

- The 6TL MMI (Platform Manager), to control the power-up and down operation of the Test System, as well as the temperature and Safety aspects. A UPS will protect the instrumentation.
- Different options as Platform Controller: either an Industrial PC or an embedded PC in the PXI chassis.
- A Mass Interconnect solution from Virginia Panel (G12), allowing the reliable and easy exchangeability of test fixtures (High mix: test different products with the same test platform).
- Easy integration with NI LabVIEW and PXI instruments, giving as a result, the highest level of modularity and scalability for your top-class production testing tool.

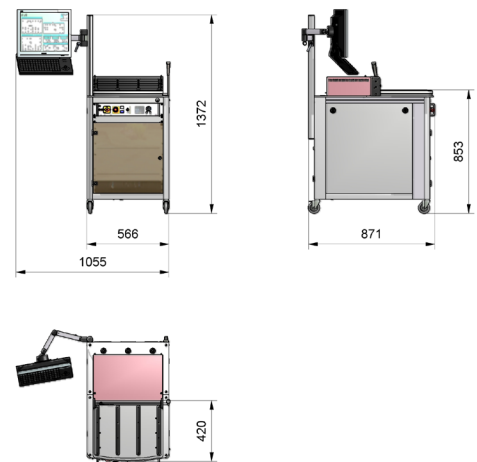
- FastATE technology: Modular, scalable and top flexible approach; Minimum wiring and easy maintenance; LabVIEW drivers.
- Mid sized - High mixed production batches
- Ideal for ISP, ICT and Functional Test
- PXI chassis direct integration
- 12-slot Virginia Panel receiver
- Platform Manager (Power, Temperature and Safety), 6TL module P/N H73000301 with EPO safety function included, and possibility to include up to 4 additional functions.
- UPS, for platform controlled power up/down and instrument asset protection
- Keyboard with trackball and TFT
- 7U 19" free rack space for integration of third party equipment
- Small footprint
- CE compliant, ESD safe
- Ready to integrate options available: Phi6 Operator Interface; Light tower; Barcode reader kit; Printer kit; auxiliary side table; Air inlet kit



[www.6TL.es](http://www.6TL.es)

For more information please contact Romex B.V, Remmerden 5, 33911TZ, Rhenen, The Netherlands.  
tel +31-317-398787, Fax+31-317-398780, e-mail: [info@romex.nl](mailto:info@romex.nl), Website [www.romex.nl/test](http://www.romex.nl/test) or [www.testprobes.nl](http://www.testprobes.nl)

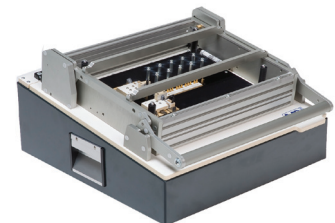
<b>Platform Operation</b>	Off-Line
<b>Type</b>	Half 19" rack with wheels
<b>Wxdxh</b>	566 x 830 x XXXmm
<b>Weight</b>	130 Kg
<b>Power requirements</b>	220V AC / 50Hz, <2KW
<b>UPS</b>	1000VA
<b>Press unit</b>	Not included (every Fixture Kit will include the press unit)
<b>Fixturing type</b>	Manual Fixture Kits with G12 ITA interface; Baseband or HF
<b>Built in 19" rack free space</b>	7U 830mm depth
<b>Mass interconnect solution</b>	12 slots. Virginia Panel G12
<b>Platform Manager</b>	6TL module P/N H73000301 (Power, Temperature & Safety Management)
<b>Platform Controller</b>	IPC or PXI embedded.
<b>Operator interface</b>	17" VGA Monitor on rear TFT arm.
<b>Keyboard + mouse</b>	Yes, Keyboard EU layout with trackball kit in lockable front drawer.



<b>The 6TL19 is ideal for</b>	ISP	Combine with YAV90ISP and Algocraft WriteNow Programmer
	ICT	Combine with YAV90Q06 and Digitaltest MTS-30
	Boundary Scan	Combine with YAV90JTAG, YAV90JTAH and JTAG Technologies
	Functional Test	Combine with YAV90CIN, YAV904X8 and PXI Chassis (6TL-08 Plus)
<b>In the following environments</b>		Production, from Low to Mid sized production batches, High Mix.

As any *fastATE* base platform, the 6TL19 features:

- 6TL **YAV** Modules compatibility.
- PXI chassis direct integration
- Reliable mass interconnect interface (VPC 90 series compatible)
- Short delivery time



	Basic	Advanced	Plus	Most commonly used Options (Ready to install)	
Controller	Not included	IPC	PXI embedded		
		Industrial 4U System Intel Core 2 Duo. Win XP. <ul style="list-style-type: none"> <li>• 6 PCI; 1 PCIe x16</li> <li>• 5 COM ports</li> <li>• 1 RS485 port</li> <li>• 6 USB ports</li> <li>• 2 Gb Ethernet ports</li> </ul>	NI PXIe-8108 Core 2 Duo 2.53 GHz Controller, Win 7.	<b>MMS9540</b>	Bar code reader Kit
				<b>H710022A1</b>	Label Printer Kit
				<b>8710032T1</b>	Side table 350x560mm
				<b>H78001000</b>	Light tower (3 colors), CAN
				<b>H71002181</b>	Air Inlet Kit
				<b>H71002190</b>	Adjust. side support for TFT
				<b>H71006600</b>	Adjust. working surface kit
<b>Platform manager</b>	H73000301	H73000301	H73000301		
<b>PXI Chassis</b>	No	No	NI PXIe-1071, 4-Slot 3U PXI Express Chassis		
<b>PN</b>	<b>H71001900</b>	<b>H7100190A</b>	<b>H7100190P</b>		