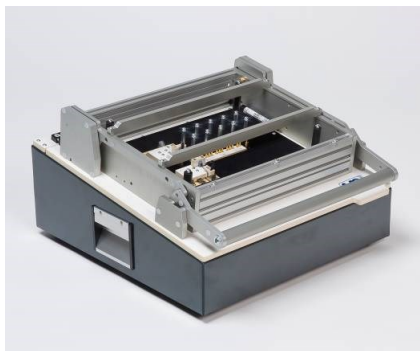


A linear cassette adapter combining the advantages of a linear movement with easy, fast and low-cost changeover from one product to another. Housing available as "stand alone" solution or prepared for a VPC Mass Interconnect ITA (S6, G12 or G12X)



The MG-01, MG02 and MG03 are flexible linear cassette adapters, with a solid hinged top plate on an ergonomically shaped rugged housing.

The reliability and accuracy of the contact between the test pad and the test probe in a test fixture is mainly determined by the mechanical construction used to bring the two together. In the MG02 Test adapter the linear push down construction is therefore designed using solid aluminum parts.




By means of ball bearings and a specially designed sliding bus we constructed a linear system with an accurate linear movement of 15mm. This allows PCB's to be contacted from the top and bottom simultaneously. The wide base housing provides enough space for easy access to the wiring, additional electronics or mechanics. The back side and bottom side of the housing can be adapted to different test system interfaces, custom configurable cable or connector interfaces, professional Mass Interconnect interfaces from VPC (S6, G12 and G12X (MG-02 & MG-03 Only)) as well as solutions for most In-Circuit Test systems. The ESD safe cassette is easy removable and includes a probe protection plate with a large usable working surface.



- Solid construction for the entire kit
- Modular approach and Ergonomic design
- Many tester interface options available
- Cassette System with optional probe interface
- Linear push down unit with 15mm linear stroke
- One hand operation, "close and test"
- Maximum number of test probes: 2000N (+/- 640 Probes)
- Optional Cassette interface VPC Icon style with up to 640 Signal points or a mix of signal, coax, pneumatic, etc.

Romex B.V. recommends ECT Pogo testprobes.

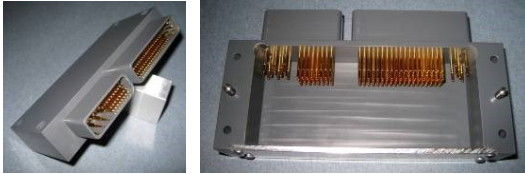
Pricing and technical information:

Image	Model	overall dim (WxDxH1xH2)	PCB Height	PCB Dim (WxD)	Linear movement	cassette interface	Optional VPC Interface	Price in €	Price Cassette	Total price
	MG-01	245x400x50x140mm	max 60mm	197x114mm	12mm	No	I1, I2, Icon	€ 530,00	€ 120,00	€ 650,00
	MG-02	470x490x100x170mm	max 60mm	337x250mm	12mm	No	I1, I2, Icon, S6, G12, G12X	€ 850,00	€ 250,00	€ 1.100,00
	MG-02-ICO	470x490x100x170mm	max 60mm	300x225mm	12mm	Yes	I1, I2, Icon, S6, G12, G12X	€ 1.290,00	€ 325,00	€ 1.615,00
	MG-03	750x490x100x170mm	max 60mm	580x250mm	12mm	No	I1, I2, Icon, S6, G12, G12X	€ 1.050,00	€ 300,00	€ 1.350,00
	MG-03-ICO	750x490x100x170mm	max 60mm	580x225mm	12mm	Yes	I1, I2, Icon, S6, G12, G12X	€ 1.475,00	€ 365,00	€ 1.840,00

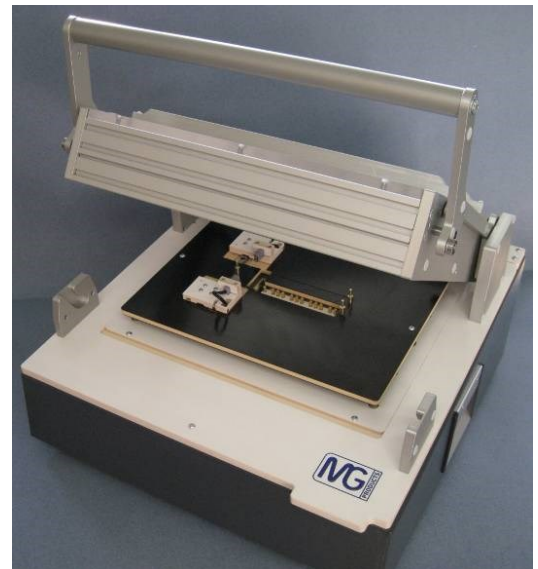
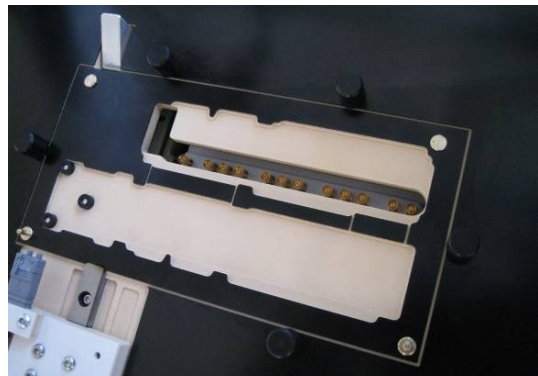
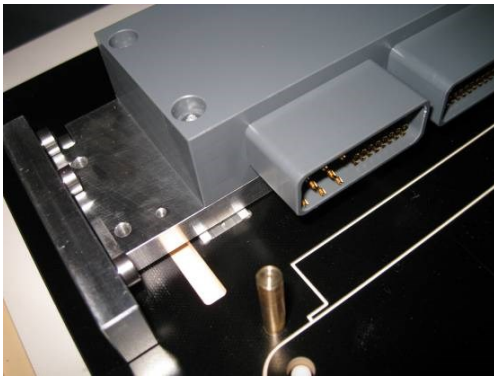
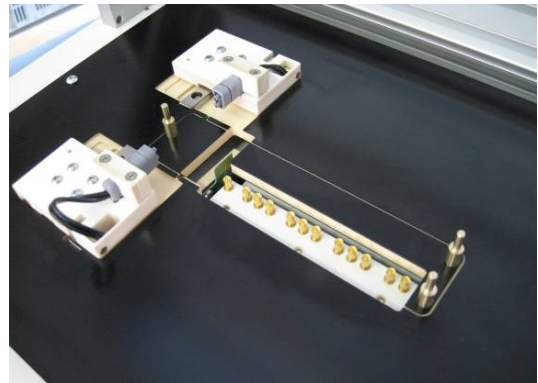
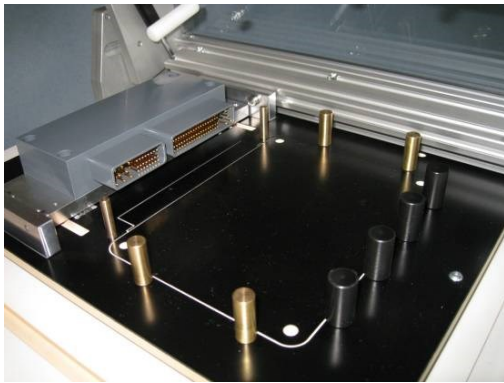
For affordable test solution based on the MG02 look at www.testprobes.nl/smartfixtures

Custom mechanical solutions that can be integrated in the above MG-01,02,03 fixture kits.

Multi connector block.



Fiber optic connector block.



Optional Icon style interconnect Interface.

Custom Side access units as well as top and bottom probing is available.

 ROMEX

 ROMEX

 ROMEX