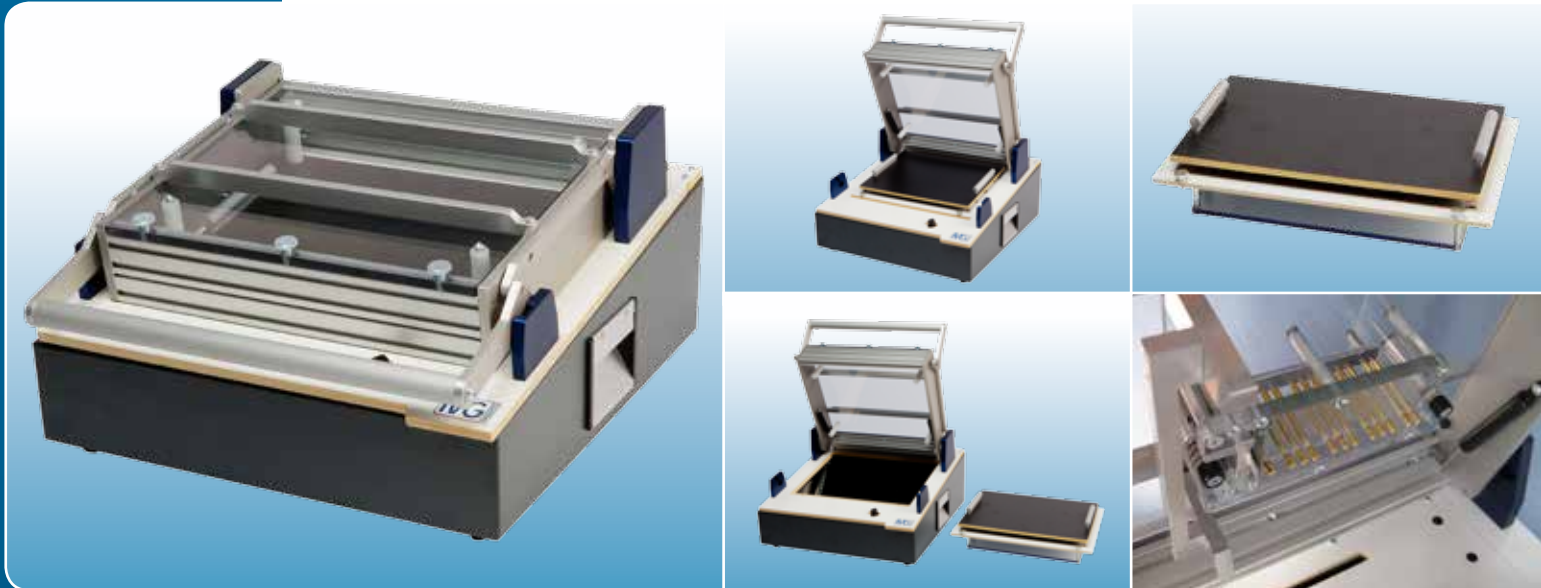


MG02 Manual Fixture

The miniaturisation of modern electronics means that it is important to guarantee high quality through precise electrical testing. This requires a reliable electric connection between the testing equipment and the unit under test (UUT). MG Products has developed a series of linear fixtures specially for this purpose: the MG series. The reliability and precision connectivity of any fixture are primarily determined by its mechanical construction. This is why MG Products uses solid aluminium parts.



We have created a unique mechanical click system using ball bearings and sliding sleeves. The UUT is connected to the spring contact pins that are connected to the testing equipment in a completely linear fashion. The UUT can be approached both from the top and the bottom and, optionally, even from the side. The ergonomic housing provides generous space for additional measuring electronics. The back and bottom of the housing can be adapted to the various test system interfaces.

FEATURES

- Linear click system with ball bearings, using gas pressure cylinders
- 10 mm ESD-proof top cover with aluminium reinforcement bars
- Steel base cabinet with detachable aluminium back and bottom panels
- Detachable interchangeable case system with an 8 mm probe protection cover
- Base cabinet fitted with a telescopic guide rail and catch

TECHNICAL SPECIFICATIONS

- Max. number of probes (2N): 1,000 units
- Max. PCB height: 60 mm
- Linear travel: 12 mm
- Outer dimensions: 470 x 490 x 100 x 170 mm (WxDxH1xH2)
- Max size of UUT: 337 x 250 mm (WxD)

PRODUCT CODE

- 5020 MG02 Manual Fixture Kit